

## Using the Guiding Framework, regionally and nationally

16 July 2025

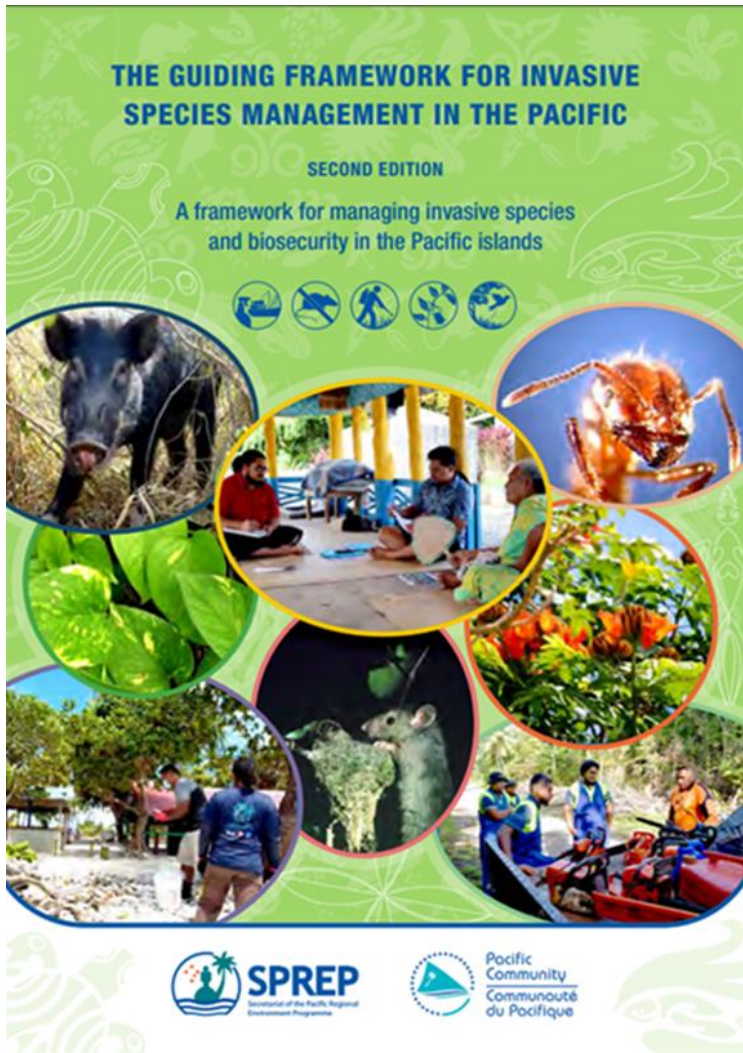
### Invasive Species Team



David Moverley  
Invasive Species Adviser



Isabell Rasch  
Project Manager, Regional Invasive  
Species Project



## THEMATIC AREAS

### Foundations

- A1. Generating Support and Changed Behaviour** — Raising awareness of and concern about the impacts of invasive species on biodiversity, the economy, livelihoods, human health, and socio-cultural values and mobilising support for action to manage and reduce impacts.
- A2. Building Capacity** — Developing institutions, skills, infrastructure, technical support, information management, linkages, networks, and exchanges required to effectively manage invasive species and biosecurity.
- A3. Legislation, Regulation, Policy, and Protocols** — Ensuring that appropriate legislation, regulations, policies, protocols, and procedures are in place and operating, to underpin the effective management of invasive species.

### Problem Definition, Prioritisation, and Decision-making

- B1. Baseline, Monitoring, and Evaluating Change** — Establishing a baseline of information on the present status and distribution of invasive species in the Pacific and a programme for detecting change, including the establishment of new high-risk invasive species, range changes, and emerging impacts due to existing and/or new invasive species.
- B2. Prioritisation** — Establishing and implementing effective systems for assessing risk and prioritising biosecurity and invasive species for prevention, management, and planning.
- B3. Research on Priorities** — Understanding priority invasive species including species biology, impacts, and vectors, and developing effective management techniques.

### Management Action

- C1. Biosecurity** — Preventing the spread of invasive species across international or internal borders.
- C2. Management of Established Invasive Species** — Reducing or eliminating the impacts of established invasive species, by eradication, containment, exclusion, or population reduction through physical, chemical, or biological control.
- C3. Restoration** — Supporting site-led management to restore ecological function by reducing the impacts of invasive species to a predetermined state whereby natural assets and values are secured.

2009 Guidelines reviewed and published as The Guiding Framework for Invasive Species Management in the Pacific  
 Endorsed by SPREP Members (2023) and SPC Members (2025)

Three thematic areas covering a comprehensive invasive species management programme

# Our strategy to deliver the regional programme



David Moverley  
Invasive Species Adviser



Josef Piri  
Invasive Species Officer



## THEMATIC AREAS



### Foundations

- A1. Generating Support and Changed Behaviour** — Raising awareness of and concern about the impacts of invasive species on biodiversity, the economy, livelihoods, human health, and socio-cultural values and mobilising support for action to manage and reduce impacts.
- A2. Building Capacity** — Developing institutions, skills, infrastructure, technical support, information management, linkages, networks, and exchanges required to effectively manage invasive species and biosecurity.
- A3. Legislation, Regulation, Policy, and Protocols** — Ensuring that appropriate legislation, regulations, policies, protocols, and procedures are in place and operating, to underpin the effective management of invasive species.

### Problem Definition, Prioritisation, and Decision-making

- B1. Baseline, Monitoring, and Evaluating Change** — Establishing a baseline of information on the present status and distribution of invasive species in the Pacific and a programme for detecting change, including the establishment of new high-risk invasive species, range changes, and emerging impacts due to existing and/or new invasive species.
- B2. Prioritisation** — Establishing and implementing effective systems for assessing risk and prioritising biosecurity and invasive species for prevention, management, and planning.
- B3. Research on Priorities** — Understanding priority invasive species including species biology, impacts, and vectors, and developing effective management techniques.

### Management Action

- C1. Biosecurity** — Preventing the spread of invasive species across international or internal borders.
- C2. Management of Established Invasive Species** — Reducing or eliminating the impacts of established invasive species, by eradication, containment, exclusion, or population reduction through physical, chemical, or biological control.
- C3. Restoration** — Supporting site-led management to restore ecological function by reducing the impacts of invasive species to a predetermined state whereby natural assets and values are secured.



gef UN@ environment programme SPREP PROE

SPREP & Regional Invasive Species Project (SRIP & RISP)

PRISMSS

Invasive alien species are better managed to strengthen and restore ecosystem services, increase resilience, and protect biodiversity

PRISMSS



Invasive Species Project Associate



Invasive Species Project Associate



PRISMSS Consultant Event Coordinator



PRISMSS Business System Consultant



Invasive Species Component Manager

**PRISMSS**  
Pacific Regional Invasive Species Management Support Service

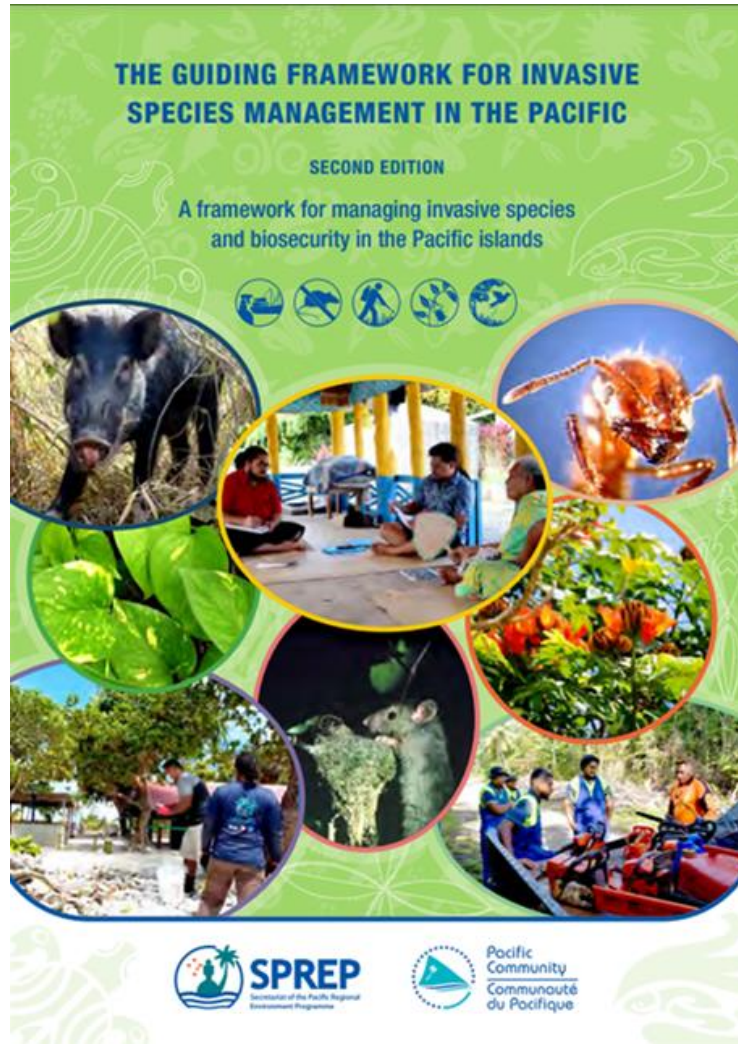


**PRISMSS**  
Powered by

# Delivering support



# Our strategy to assist the development national programmes



## THEMATIC AREAS

### Foundations

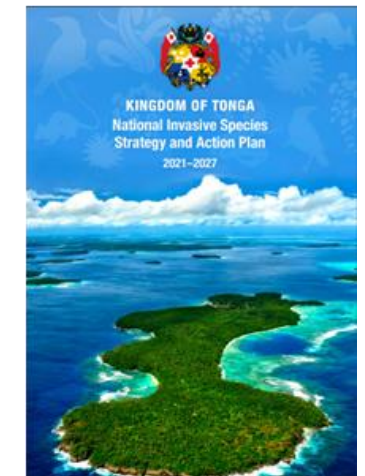
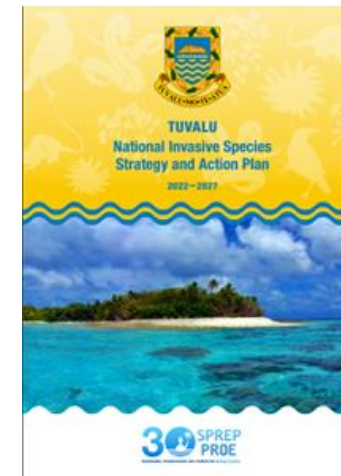
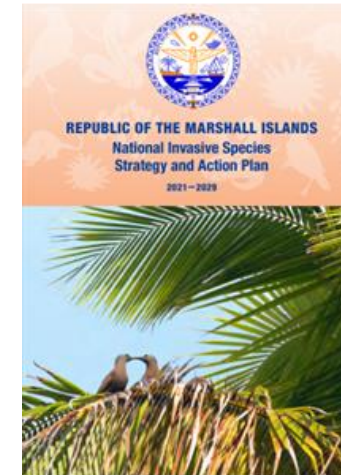
- A1. Generating Support and Changed Behaviour** — Raising awareness of and concern about the impacts of invasive species on biodiversity, the economy, livelihoods, human health, and socio-cultural values and mobilising support for action to manage and reduce impacts.
- A2. Building Capacity** — Developing institutions, skills, infrastructure, technical support, information management, linkages, networks, and exchanges required to effectively manage invasive species and biosecurity.
- A3. Legislation, Regulation, Policy, and Protocols** — Ensuring that appropriate legislation, regulations, policies, protocols, and procedures are in place and operating, to underpin the effective management of invasive species.

### Problem Definition, Prioritisation, and Decision-making

- B1. Baseline, Monitoring, and Evaluating Change** — Establishing a baseline of information on the present status and distribution of invasive species in the Pacific and a programme for detecting change, including the establishment of new high-risk invasive species, range changes, and emerging impacts due to existing and/or new invasive species.
- B2. Prioritisation** — Establishing and implementing effective systems for assessing risk and prioritising biosecurity and invasive species for prevention, management, and planning.
- B3. Research on Priorities** — Understanding priority invasive species including species biology, impacts, and vectors, and developing effective management techniques.

### Management Action

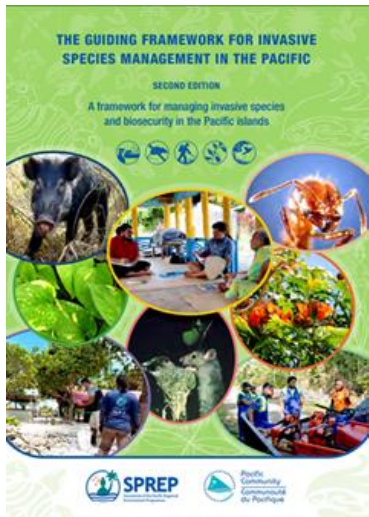
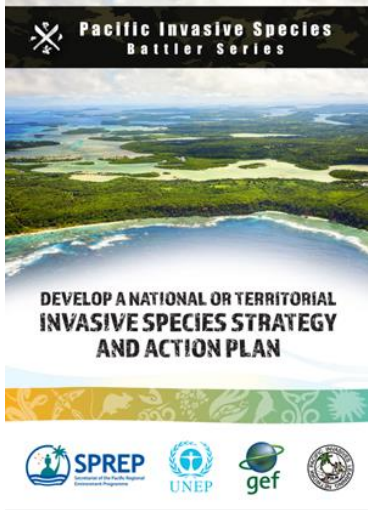
- C1. Biosecurity** — Preventing the spread of invasive species across international or internal borders.
- C2. Management of Established Invasive Species** — Reducing or eliminating the impacts of established invasive species, by eradication, containment, exclusion, or population reduction through physical, chemical, or biological control.
- C3. Restoration** — Supporting site-led management to restore ecological function by reducing the impacts of invasive species to a predetermined state whereby natural assets and values are secured.



## Structure of the Action Plan

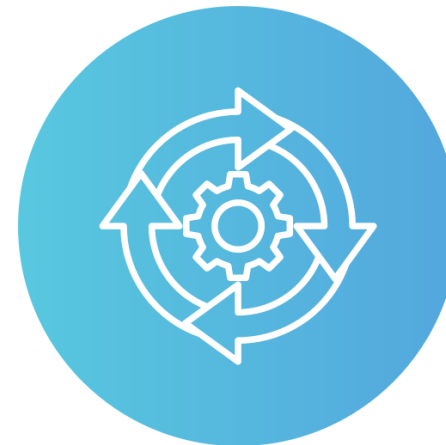
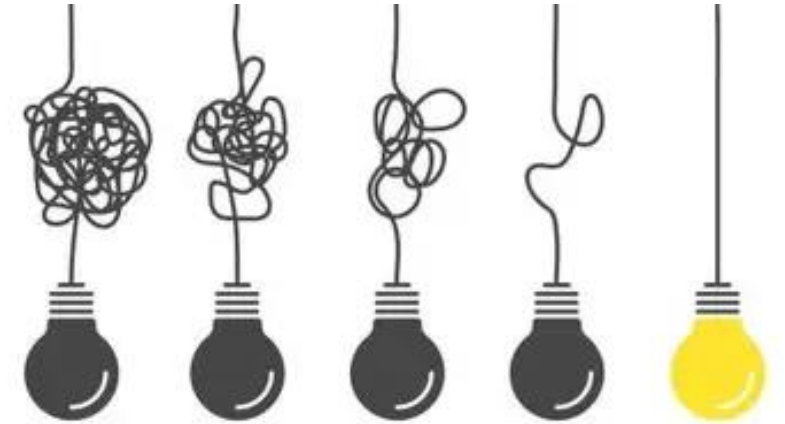
# NISSAP Development

- First Pacific NISSAPs developed by SPREP under the GEF-PAS Regional Invasive Species Project (FSM, Marshall Islands, Niue, Tonga, Vanuatu)
- NISSAP Battler Guide developed (2015), ready for review
- TISSAP developed for territories (W&F, Tokelau, Pitcairn)
- GEF6 Regional Invasives Project
- Revised regional guidelines
- Streamlined process



# Streamlining the NISSAP Process

- Standardized NISSAP template which are aligned to Guiding Framework IS Management
- Template for review of previous NISSAP – a crucial step in updating NISSAPs
  - Highlights achievements of previous NISSAP and lessons learned
  - Ensures priority actions are carried forward through Action tables
- Draft NISSAP
  - Populated review template and background information under relevant sections
  - Presented through consultation with relevant communities and technical committees
    - National Technical Advisory Group
    - Community consultations



# NISSAP – Other Support Tools & Lessons Learned

- Consultation Presentation Template
- NISSAP Battler Guide
- SPREP assistance to draft Cabinet submission papers and address questions
- Mentimeter
- Organising of NISSAP Consultation with other events e.g.: Tonga



# Review of template documents



- BRB
  - [NISSAP Template](#)
  - [Review Template](#)
- Available on request
  - Consultation Presentation Template
  - Support with submissions

